

CAB[®]

S-Hooks

**SAFE, STRONG, DURABLE
AN INDUSTRY FAVORITE**



9-inch S-Hook
CAB 9449



13-inch S-Hook
CAB 9450

Strongest, Most Cost Effective S-Hooks Available

CAB S-Hooks quickly and easily fix many job site safety hazards. Use CAB S-Hooks to manage bundles of cables, wires, tubing, hoses, pipes, and more. Keep cables neat and out of harm's way.

CAB S-Hooks can help with OSHA housekeeping requirements. Use them to eliminate tripping hazards on stairs or in busy aisles.

Easy to install. CAB S-Hooks are ideal for permanent or temporary applications, such as construction areas. Their bright orange color provides great visibility, improving safety by alerting workers to the presence of electrical cables or sensitive hoses.

CAB S-Hooks for Safer Workplaces

CAB S-Hooks are manufactured from high tensile spring steel for superior load handling. They are far stronger and more durable than competitor products made from plastic, and CAB S-Hooks will not shatter like plastic hooks, even in extreme heat or cold.

CAB S-Hooks are completely coated with heavy PVC plastisol:

- ✓ 80 mil thick (2mm)
- ✓ High dielectric grade (400 volt/mil)
- ✓ UV rated
- ✓ Flame retardant
- ✓ Corrosion resistant
- ✓ Smooth and easy to handle
- ✓ Does not deteriorate or mar surfaces

CAB S-Hooks stand up to constant use, indoors or outside in extreme weather. CAB S-Hooks' outstanding strength and durability make them the best choice for long life in demanding workplaces.



Made in the USA



Before

BEFORE: Messy cables and hoses are a major tripping hazard. Floor traffic increases possibility of crimping or breakage, possibly disrupting important production workflow. CAB S-Hooks are the answer.



CAB S-Hooks are great for meeting OSHA Regulations. They help eliminate trip hazards!

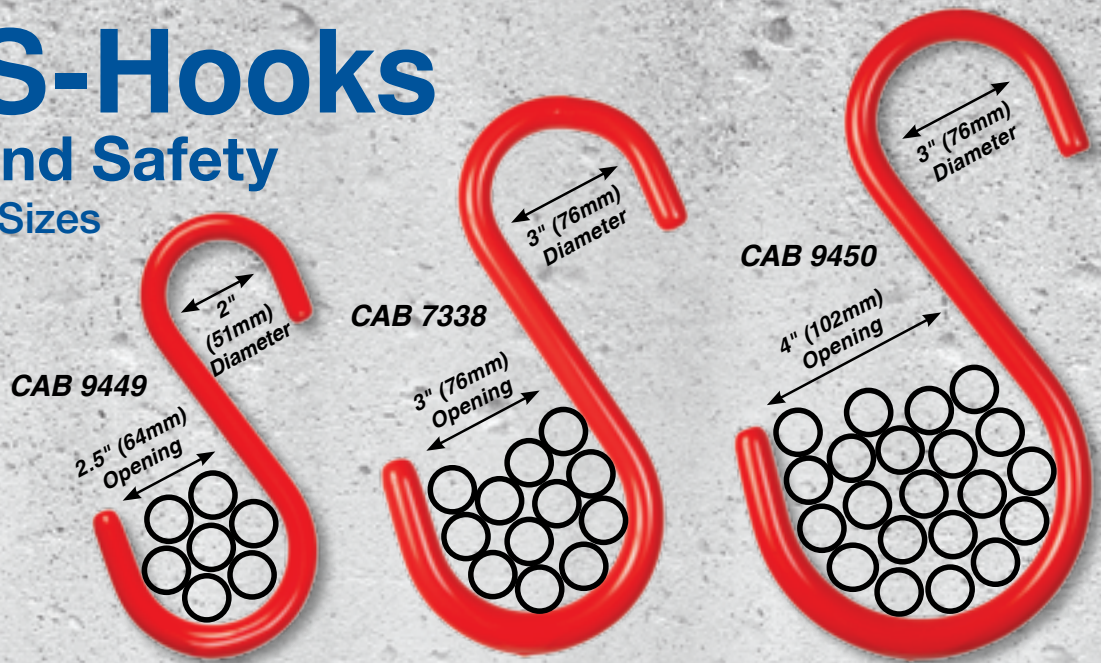
After

AFTER: CAB S-Hooks install in minutes, easily keeping cables and hoses safe and out of the way. CAB S-Hooks are a cost effective, efficient solution to many common housekeeping problems in busy workplaces.

CAB S-Hooks

for Strength and Safety

Standard & Custom Sizes

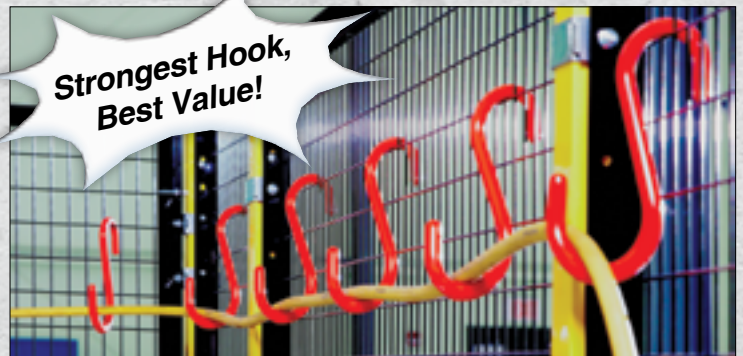


CAB Number	S-Hook Height	Bottom Diameter	Working Load Limit	1" Dia. Carry Qty.	Quantity per Box	Weight per Box
CAB 9449	9" (229mm)	3" (76mm)	275lb (125kg)	7	25 hooks	18lb (8.2kg)
CAB 7338	11" (279mm)	4" (102mm)	325lb (150kg)	12	10 hooks	15lb (6.8kg)
CAB 9450	13" (330mm)	5" (127mm)	350lb (160kg)	21	10 hooks	17lb (7.7kg)



**Nonconductive,
Corrosion Resistant,
Smooth Surface!**

CAB S-Hooks easily hook to almost any support. Bottom loop is wide enough to securely capture large bundles.



**Strongest Hook,
Best Value!**

CAB S-Hooks install quickly and easily. They are strong and versatile, and can be re-used in many different applications.

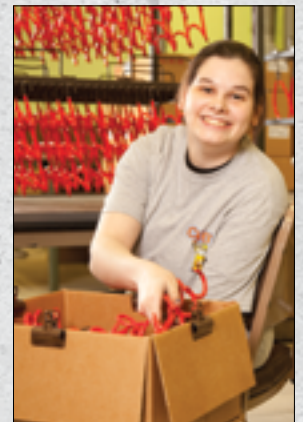


CAB® is a private, non-profit organization dedicated to providing job opportunities and services to persons with disabilities. CAB® Products are manufactured by CAB® employees with great pride and integrity. We deeply appreciate the support of our customers. Through your orders, many disabled persons are given the opportunity to be productive, independent and self-sufficient.

CAB

**Hooks, Hangers,
Safety Products**

Cambria County Association for the Blind & Handicapped
175 Industrial Park Road Ebensburg, PA 15931-4109 USA
www.cabproducts.com Call: 814.472.5077



**Tough,
Industrial-Grade
Hangers!**

CAB[®]

Heavy Duty Hangers and J-Hooks

Safe, strong support for electrical cables, hoses and pipes. CAB's standard J-Hooks are made from .180" x 1" (4.6 x 25.4mm) safety edge steel. For added safety and protection, they have a heavy 80 mil (2mm) coating of high-visibility orange plastisol. CAB's high dielectric grade plastisol has a 400 volt per mil dielectric breakdown strength and is flame retardant. It is tough, durable and extremely resistant to corrosion. Available in sizes up to 12" (305mm) diameter in a wide variety of configurations.

*Standard
J-Hook
CAB 343
CAB 347
CAB 349
CAB 350*

CAB Standard J-Hooks

Safe, strong supports for all types of sidewall applications. Made from plain or hot dipped galvanized steel. Keyhole has 1/2" (13mm) opening and 5/16" (8mm) slot. Available in sizes up to 12" (305mm) diameter.

CAB 343 1-1/2" (38mm) dia., 5-1/2" (140mm) long, 100/box, 47 lbs. (21.4kg)

CAB 347 3" (76mm) dia., 5-1/2" (140mm) long, 50/box, 29 lbs. (13.2kg)

CAB 349 4" (102mm) dia., 6-3/4" (171mm) long, 25/box, 18 lbs. (8.2kg)

CAB 350 5" (127mm) dia., 9-5/8" (244mm) long, 25/box, 23 lbs. (10.5kg)

CAB 348 Same as CAB 347 except made from **hot dipped galvanized steel.**

CAB 8037 Same as CAB 349 except made from **hot dipped galvanized steel.**

CAB Custom Manhole Hangers

These custom-made hangers are designed to solve problems created in tight spaces and for special requirement applications. Available in a wide range of materials and configurations.

*Side Mount
Hanger*

CAB 6958

CAB 6959

CAB 5133

CAB 6681

CAB 6704

CAB Side Mount Hangers

Heavy duty supports designed to carry single or multiple cables in highly corrosive environments. Carriers are 3" (76mm) diameter. Can be custom made with any number or size carriers required.

CAB 6958 1 carrier, 8" (203mm) long, 25/box, 28 lb. (12.7kg)

CAB 6959 2 carrier, 14-1/2" (368mm) long, 10/box, 24 lb. (10.9 kg)

CAB 5133 3 carrier, 20" (508mm) long, 10/box, 32 lb. (14.5kg)

CAB 6681 4 carrier, 26" (660mm) long, 5/box, 22 lb. (10kg)

CAB 6704 4 carrier, 26" (660mm) long, custom heavy duty style

CAB Heavy-Duty S-Hooks

CAB S-Hooks effectively manage large bundles of pipe, hose, and cable. They are extremely strong and durable for use in highly corrosive environments, indoors or outdoors. Manufactured from strong 1/2" (13mm) diameter round stock with heavy plastisol coating over 100% of the surface. Contact CAB for S-Hook brochure and samples.

**Great for Meeting
OSHA Regulations;
Eliminates Trip Hazards!**

CAB 9449 3" (76mm) dia. bottom loop, 9" (229mm) long, 25/box, 18 lbs. (8.2kg)

CAB 7338 4" (102mm) dia. bottom loop, 11" (279mm) long, 10/box, 15 lbs. (6.8kg)

CAB 9450 5" (127mm) dia. bottom loop, 13" (330mm) long, 10/box, 17 lbs. (7.7kg)

*Heavy-Duty
S-Hook
CAB 9449
CAB 7338
CAB 9450*



Call CAB for help on your special projects or custom applications.

Cambria County Assn. for the Blind & Handicapped

175 Industrial Park Road

Phone: (814) 472-5077

Ebensburg, PA 15931-4109 USA

E-mail: cab@cabproducts.com

Web: www.cabproducts.com

Copyright © 2017 Cambria County Association for the Blind and Handicapped.

All rights reserved. CAB is a registered trademark of the Cambria County Association for the Blind and Handicapped and is used as such herein. ver2017



CAB U-Bolts

Made in a wide variety of sizes and styles to safely retain and bundle cables and hoses. Manufactured from any diameter threaded round stock with a heavy plastisol coating for maximum safety and protection.